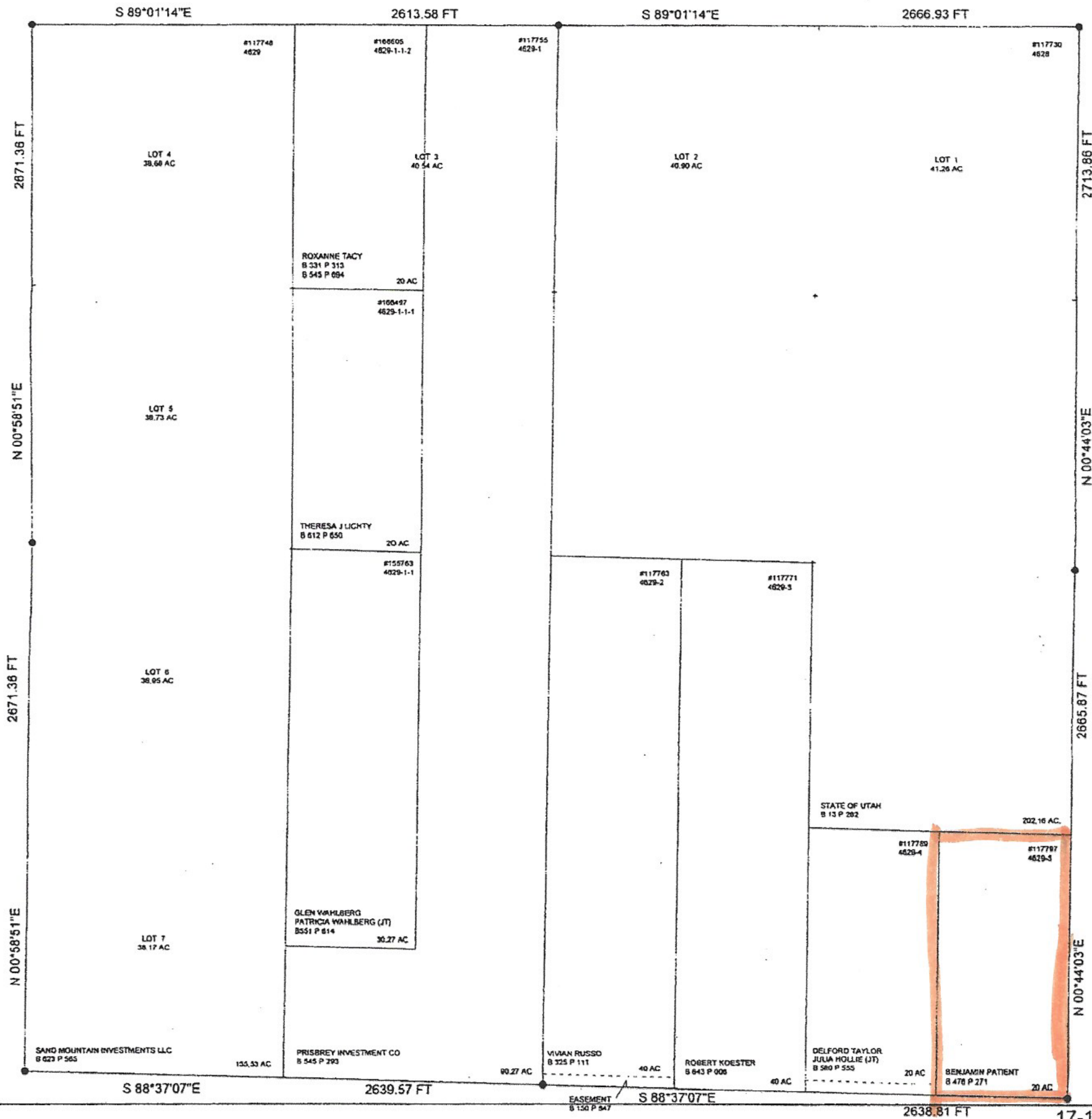


(6)

MILLARD COUNTY

SECTION 6, T 17 S, R 8 W S.L.B. & M.

THIS PLAT IS MADE SOLELY FOR THE PURPOSE
OF ASSISTING IN LOCATING THE LAND, AND
THE RECORDER ASSUMES NO LIABILITY FOR
VARIATIONS, IF ANY, WITH AN ACTUAL SURVEY.



17-135
06-17S-08W