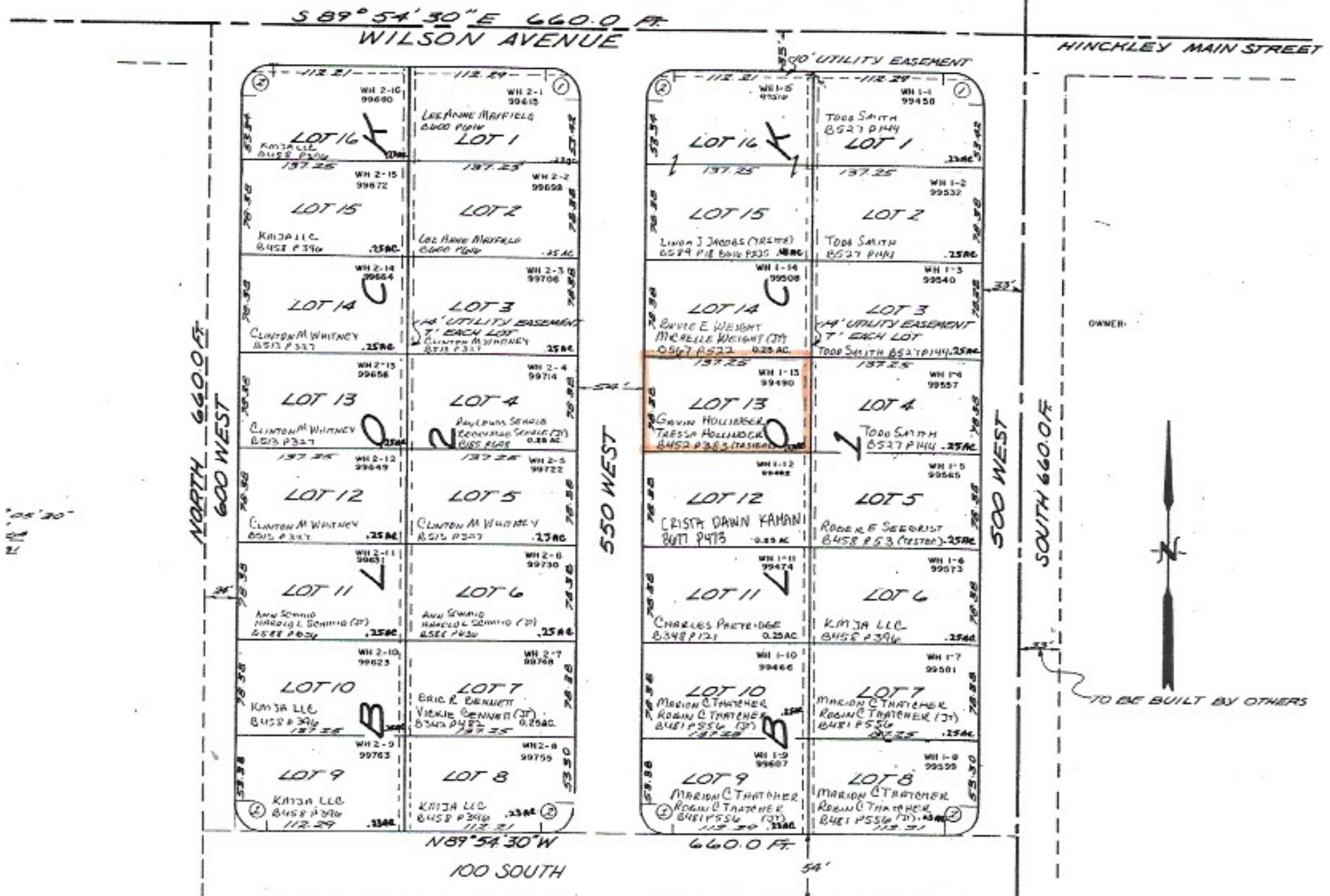


WEST HINCKLEY SUBDIVISION (UNIT I) PLAT "A"

NE COR. OF THE
SEC. 19 T.17S., R.7W.



2' 10" 00' 30"



NE COR. SW 1/4 SEC. 19
T.17S., R.7W., S.L.M.

OWNER - T & C LAND COMPANY, A UTAH PARTNERSHIP

DRAWER COPY