

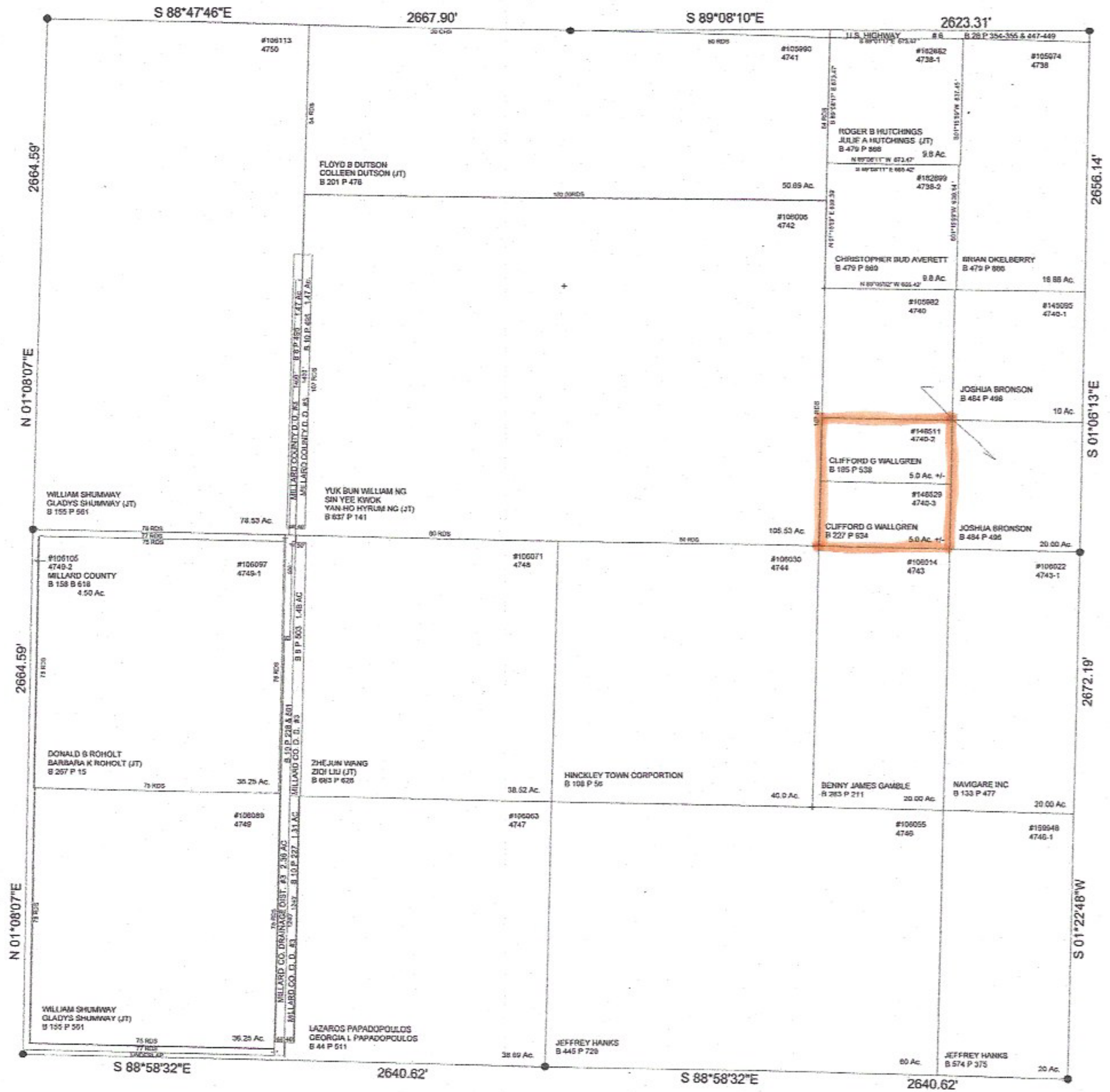
MILLARD COUNTY

(HD 13)

BOOK 17 PAGE 151
SCALE: 1" = 400'
SEPTEMBER 24, 2020

SECTION 24, T 17 S, R 8 W S.L.B. & M.

THIS PLAT IS MADE SOLELY FOR THE PURPOSE OF ASSISTING IN LOCATING THE LAND, AND THE RECORDER ASSUMES NO LIABILITY FOR VARIATIONS, IF ANY, WITH AN ACTUAL SURVEY.



17-151
24-17S-08W